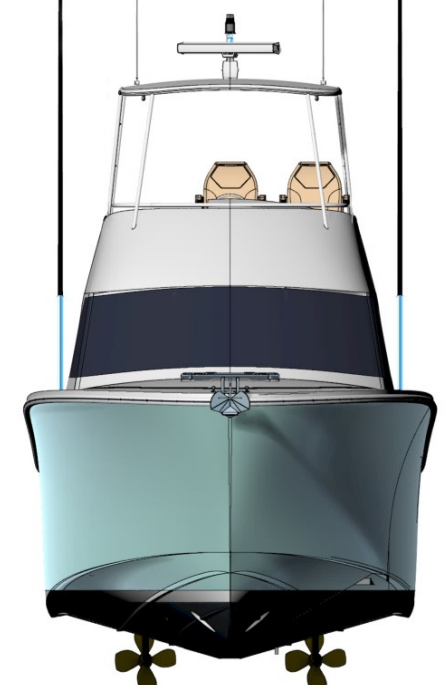


MOULDED LENGTH:	10.4 M	CRUISE SPEED:	24 KNOTS
BMAX:	3.49 M	RANGE AT CRUISE:	TBD
DRAFT:	0.77 M FULL LOAD	DIESEL ENGINE:	2 X 250-400, 1 X 500-800HP
WEIGHT:	TBD	DRIVE:	SHAFT DRIVING PROPELLERS IN TUNNELS
CONSTRUCTION:	VACUUM INFUSED COMPOSITES	BOW THRUSTER:	ELECTRIC TUNNEL 60KG.F
DESIGN STANDARD:	AS1799/NSCV	FUEL:	1700 LITRES (800 AFT/ 900 FWD)
MAXIMUM SPEED:	35 KNOTS HALF LOAD ESTIMATED	WATER:	250 LITRES DRINKING/700 LITRES BALLAST



The Tasman 10 builds on the proven T80 design to create a modern, versatile sports fishing boat that will bring a level of performance and comfort not currently seen in the market.

Similar to the T80, the vessel will feature resin-infused vinyl ester hulls, and all parts are 100% composite - no wood. The T10 has significant bow flare, broad chines, and a fine entry leading to 17.5 degree deadrise at the transom.

Propulsion options will be single or twin screw with room to fit engines from all major manufacturers. The engine room will have space for an optional generator and a gyroscopic stabiliser will fit in a separate compartment if required. Water ballast is standard and the vessel will be designed to comply with AMSA requirements for 2B operations with 10 onboard.